

DDMI

Digital Dashboard Management Interface

DDMI

Digital Dashboard Management Interface



DDMI is fully scalable and customisable. Any specific applications our customers require can be integrated in to an already future proof system. DDMI now comes as standard in all of our vehicles.



Interoperability of Systems

A powerful tool, bringing simplicity & clarity to complex operational environments

Paramedics, Fire Fighters and Police Officers don't need to be IT experts to operate our Digital Dashboard Management Interface (DDMI).

The DDMI is our easy to use operating system built for the emergency services.

It combines all systems and solutions into one seamless interface allowing operational personnel to control, monitor and analyse every aspect of incident response from one place.

Totally future proof and instantly recognisable, DDMI is a highly

innovative solution that gives you even better value from your Excelerate solutions purchase, operational use and training investment. It improves ease of use and reduces potential downtime with less need for on board intervention. It can also be viewed remotely within an HQ environment to provide a "second pair of eyes capability".

The system also automates many functions meaning complicated technologies and actions are made simple, reducing the requirement for human intervention and allowing our customers to focus on their primary duty as emergency responders.

A result of our internal investment in innovation and research, DDMI is unique in the market and a powerful tool bringing simplicity and clarity to complex operational environments.

Features include but are not restricted to:

- One touch operation
- Environmental data & trend analysis
- Automatic satellite system control
- Electronic compass and orientation
- CCTV integration
- Screen switching
- Power management
- Status & health of systems

Access to what you need all in one place

The Home Navigation Screen identifies each module within the interface and incorporates an alert system for each page. The alert system notifies the user of activity from within a specific function, enabling the operator to immediately monitor and control the area of interest.



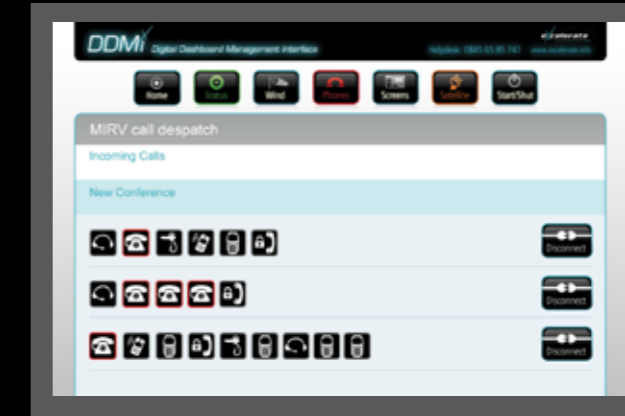
Status of Systems

Full visibility of all integrated systems, networks and devices reminding users exactly what is at their disposal. Screen population is dependent upon the amount of technology integrated.

At a glance recognition of performance with drop down explanations and fault finding tips.

Designed to assist reducing operational downtime with the ability for proactive remote technical support to reduce on-board intervention.

Remote viewing via our satellite broadband link or failover capability can be provided to authorised users to enhance safety and technical support.



Communications Management

An extraordinary solution to the multitude of usually incompatible communications devices required to address all eventualities and circumstances.

The simple to use drag and drop interface provides you with the ability to conference, receive and connect to any integrated type of device such as landlines, UHF, VHF, mobile and VoIP phones.

Allows all integrated devices and networks to be connected to each other either as one-to-one calls or multiple user conferencing.

The interface is an easy drag-and-drop solution

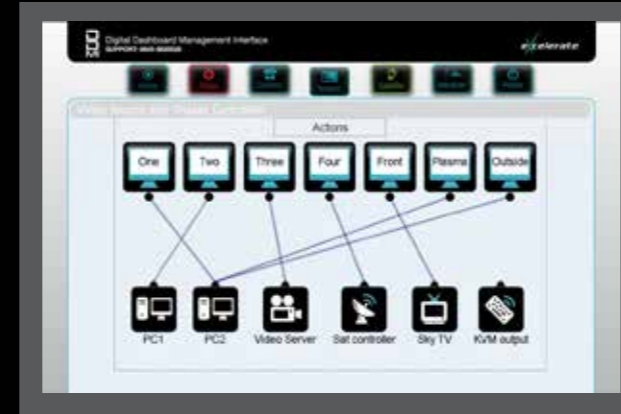
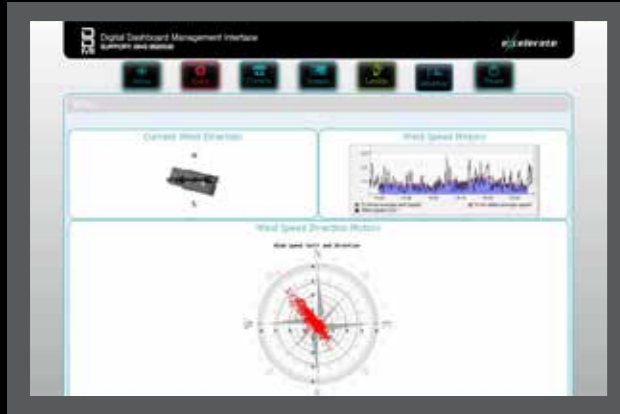


Satellite Control

The Satellite Control interface simplifies the automatic deployment, management and monitoring of the roof mounted satellite communications platform making this critical function a straightforward process capable of being handled by non-technical staff.

Users are spared the extra work that would be required to go into a separate system for satellite management.

User friendly, intuitive controls are essential for checking satellite signal strength and ensuring robust, resilient communications and uninterrupted data flows. The system improves line-of-sight recognition capability.



Environmental Data & Trend Analysis

A Scalable module that integrates feeds from equipment designed to analyse environmental statistics and conditions and presents trends and plots the information over time.

Such information can include but is not limited to:

- Wind direction, speed and reports associated with weather from equipment feeds/sensors and also secondary sources via the internet link such as MET office reports.
- Gas or harmful material analysis and temperature readings, plume prediction etc.
- The page can be configured to display multiple layers of information depending on customer requirements.

Power Systems

The power management solution interacts with all systems within the communications rack and ensures that the automatic start-up/shut down of all the systems is managed safely and securely at the touch of 'one button'. This eliminates the need for each rack-mounted system to be turned off manually or in isolation, thereby ensuring that the correct sequence is followed and that repetitive human functions are automated, reducing the possibility of human error. This can be enabled either via the DDMI software or hardware.

The above capability can be extended to other vehicle systems.

Screen Switching

A simple drag and drop interface gives operators the ability to match any number of video sources to any or all required displays on board the vehicle. This allows fast, error-free information changes to suit the dynamics and pressures of any incident. No incident is ever the same so flexibility is a prerequisite and so is simplicity





DDMI Hardware

- 2U Rack mountable 9-36V DC powered, fan-less, ruggedized, low power consumption processor unit equipped with solid state disk.
- Built in 3/4G or SatCom connectivity available for remote support and management
- 4 hour battery back-up should vehicle power be disrupted
- Integrated GPS
- Traffic light status and alert buttons for system state
- Simple one button sequenced power up and shutdown
- Configurable options can include: Meteorological and vehicle orientation sensor



Remote Support & Diagnostics

With built in 3/4G and satellite connectivity, we can support you remotely, limiting downtime and on board intervention

The benefits for users and operational personnel include:

- Real time systems monitoring and status identification
- Minimal down time should a fault occur
- No need for board intervention.

“The interfaces that we use such as DDMI are a real advantage. It is very simple to use. We have also had a few of our own special requirements that weren't in the system and Excelerate have been fantastic in integrating new features into DDMI for us”

Craig Brownlie

Acting Manager Structural Planning, Victoria Country Fire Authority.



